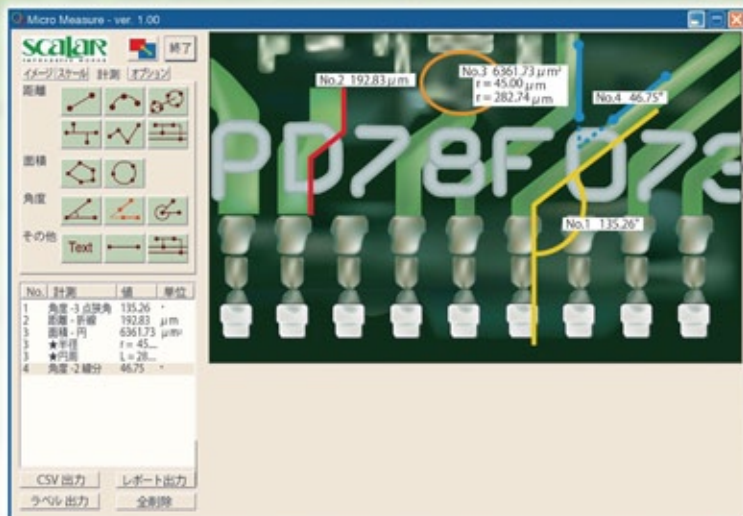


MicroMeasure

Measures distances, areas and angles of the object(s) on a still image.



Measurement Functions

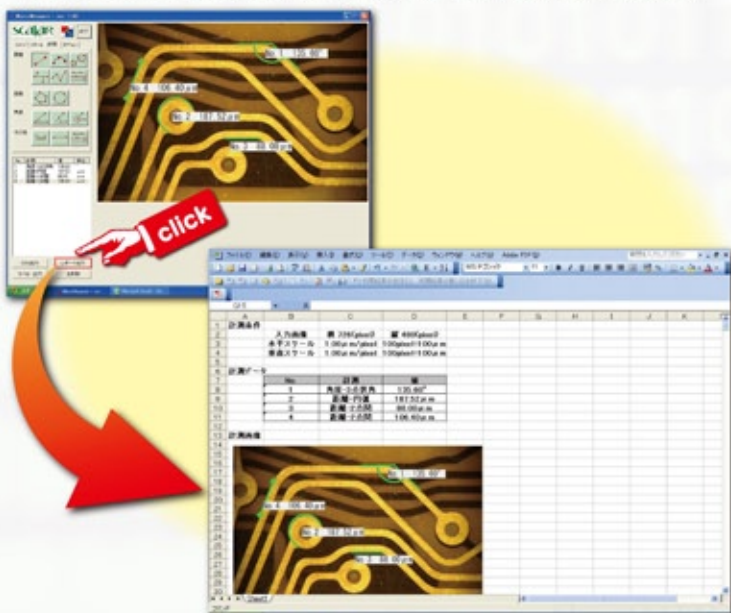
- Distance between 2 Points
- Distance of an Arc
- Distance from Circle to Circle
- Distances of Perpendicular Lines from a Standard Line
- Distance of a Broken Line
- Distances between Parallel Lines
- Area of a Polygon
- Area, Radius and Circumference of a Circle
- Degree of an Included Angle between 3 Points
- Degree of an Included Angle between 2 Lines
- Degree of an External Angle between 3 Points
- Text** Text Input
- Drawing Standard Lines and Parallel Lines

Data Saving

- Exporting data to CSV
- Saving an image with labels as JPG or BMP

Making a Report

- Making a report with an image and measured results in Microsoft Excel worksheet with just one click.



System Requirements

Monitor Resolution:1024(dot) x 768(dot) or greater
 OS:Windows XP/Vista
 Capture Device:Device Supporting Direct X
 Application:Microsoft Office 2000/2003/2007

*Without Microsoft Office, "Making a Report" function does not work.

<http://www.myguard.com>

遠京企業股份有限公司
 MYGUARD CO., LTD.

TEL: +886-3-327-0080
 FAX: +886-3-327-0082
 E-Mail: info@myguard.com

*所有其他產品之圖片及品牌名稱皆可能為各家持有公司之商標或註冊商標。
 *功能及規格如有變動，恕不另行通知。

●Product information in this catalog is as of October 2008. ●Product appearance and specifications are subject to change.
 ●Since this is a printed catalog, the colors of products shown may differ slightly from those of actual products.
 Copyright © 2008 Scalar All Rights Reserved